

Laminex™ Laminate

High pressure laminate for interiors



Laminex™
NEW ZEALAND

Contents

- 2. Introduction
- 3. Features and Benefits
- 5. Classic Collection Introduction
- 7. Minerals & Marbles
- 23. Whites & Solids
- 31. Woodgrains
- 37. Speciality Collection Introduction
- 39. Alucci™
- 43. Metallics
- 47. Magnetic/Writeable
- 49. Design Considerations
- 49. Applications
- 53. Specification Considerations
- 53. Edge Profiles
- 56. Care and Maintenance
- 57. Finishes
- 59. Complete Colour Range
- 63. Order Samples
- 65. Availability Guide





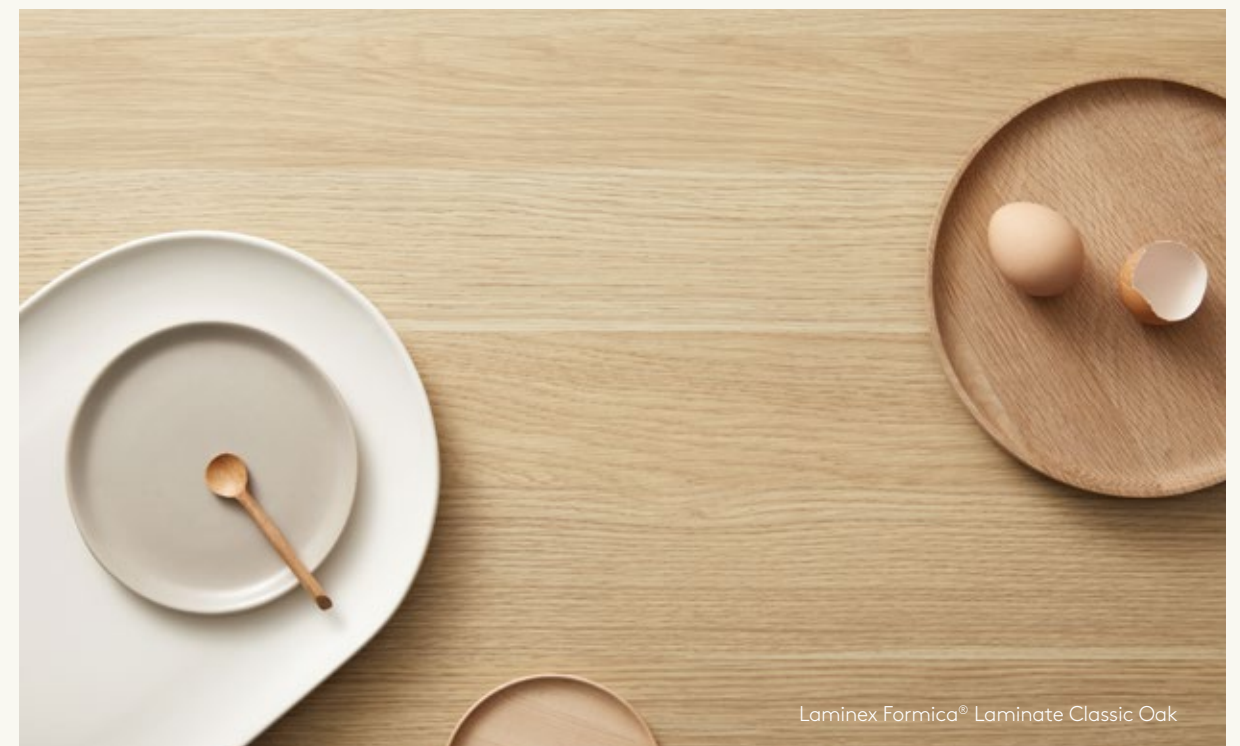
Kitchen island benchtop, back benchtop and splashback Laminex Formica® Laminate Pietra Cloud,
Top cabinetry Melteca® Snowdrift, **Curved base of kitchen island** Laminex Formica® Laminate Snowdrift

INTRODUCTION



Laminex™ Laminate

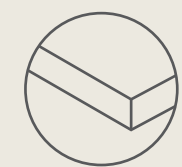
Inspired by shape and form, combining sophistication with modern colours and finishes. Laminex™ Laminate reimagines the classics whilst embracing the trends, with the durability and reliability to stay looking sleek and contemporary in the most demanding interior environments.



Laminex Formica® Laminate Classic Oak

LAMINEX™ LAMINATE

Features and Benefits



Matching
ABS Edgetape

ABS Edgetape has a thickness of 1mm which disguises the black line edge, creating a seamless pattern and colour.

- Matches the colour of the laminate.
- Easy to apply post pressing.
- Non-toxic.
- Available across 90% of the range.
- Please refer to availability guide.



Antimicrobial

Selected décors within the range have antimicrobial properties meaning it helps fight germs, making it perfect for keeping food safe.

- Innovative surface that inhibits the growth of bacteria and fungi.
- Independently tested for antibacterial and antifungal efficiency in accordance with ISO22196:2011, JIS Z2801 and ASTM G21.
- Available across 75% of the Laminex™ Laminate range.
- Please refer to availability guide.



Easy to
Clean



Stain
Resistant



Durable



7 Year
Warranty



UV Stable
Indoor Use
Versus natural timbers



Horizontal
Application



Vertical
Application



Fire
Rating

Laminex™ Laminate offers you the design and reliability needed to create both residential and commercial spaces with the added benefits of a healthier and long-lasting material backed by a 7 year limited warranty.



Classic Collection

Born off the back of local and global design influences, the Laminex™ Laminate/Formica® Classic Collection contains the best of the best in terms of décor design, finish and colour - giving you the variety and reliability you need in one sleek collection. Including a vast range of our most loved décors as well as some modern, new additions making it perfect for all your benchtops, countertops, doors and work surface solutions.

Minerals & Marbles

Laminex™ Minerals & Marbles range is inspired by timeless marble, granite and concrete surfaces. Marble décors offer sophistication whilst our aggregates deliver a luxurious look of natural stone and quartz. Our concrete surfaces are raw and unrefined and bring a sense of lasting durability.

Whites & Solids

Laminex™ Whites & Solids offer a range of base tones giving each shade its distinctive character. Cool whites bring an open, contemporary look, while warmer whites work beautifully within classic interior styles. Mid-tone solids are inspired by nature, offering raw, organic characteristics. A selection of dark-tone solids feature deep earthy browns, through to intense charcoals and blacks.



Woodgrains

Laminex™ Woodgrains surfaces beautifully reflect the authentic textures and tones of solid timbers. Select from cool and neutral grey tones, through to lighter warm and darker woodgrain surfaces.



Minerals & Marbles

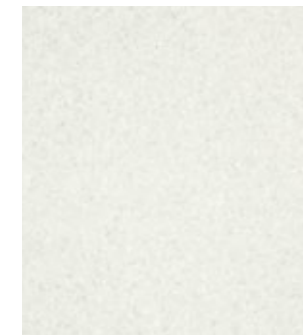
Inspired by the natural beauty of marble, stone and quartz.

The Minerals & Marbles range is made up of three categories - Minerals, Concrete & Slates and Veins & Marbles. From delicate to large scale designs that add sophistication to any space.



Bathroom vanity and splashback Laminex™ Laminare Carrera Marble
Shelf Laminex Formica® Laminare Classic Oak

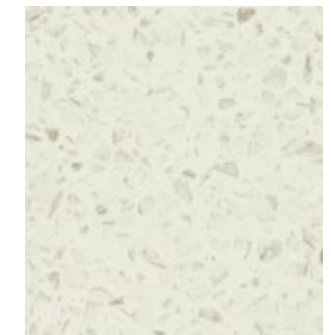
Minerals



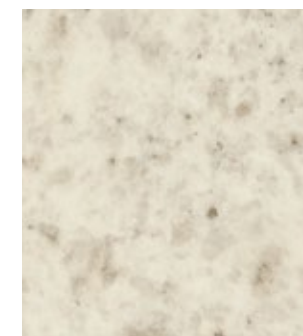
Fresh Snow



Cocoa Sand



Pure Mineralstone



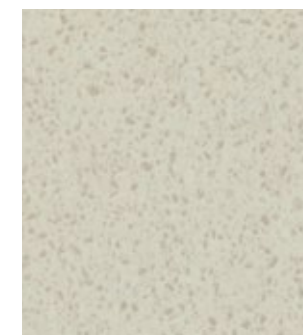
White Kashmir



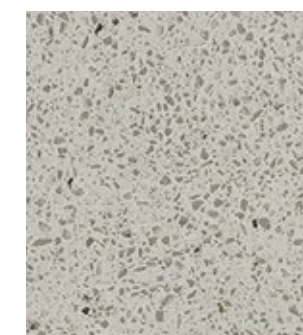
Sand Pebble



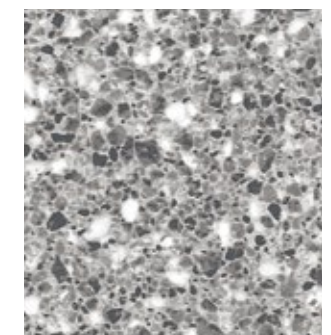
Amaretto Stone



White Finestone



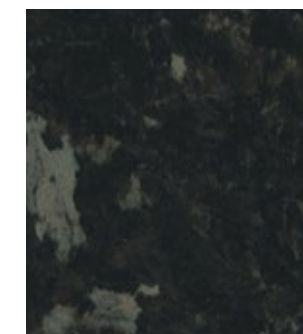
Grey Finestone



Flint Crystal



Kashmir Granite



Flinders Black



Black Sky

Back cabinetry Melteca® Winter Sky,
Back wall lining Laminex™ Metallic Laminate Brushed Aluminium,
Counter Laminex Formica® Laminate Tinted Paper Terrazzo,
Tabletop Laminex Formica® Laminate Burnt Ochre

Concrete & Slates

New



Granular Limestone

New



White Cement

New



Pearl Concrete

Swatches shown are a section
between 60-80% of a full sheet.

Benchtop and splashback Laminex Formica® Laminate White Cement,
Kitchen island cabinetry and under benchtop cabinetry Laminex Formica® Laminate Urban Planked Oak,
Top cabinetry Melteca® Possum



Elemental Ash



Platinum Micro



Tinted Paper Terrazzo

Swatches shown are a section between 60-80% of a full sheet.



Limed Concrete

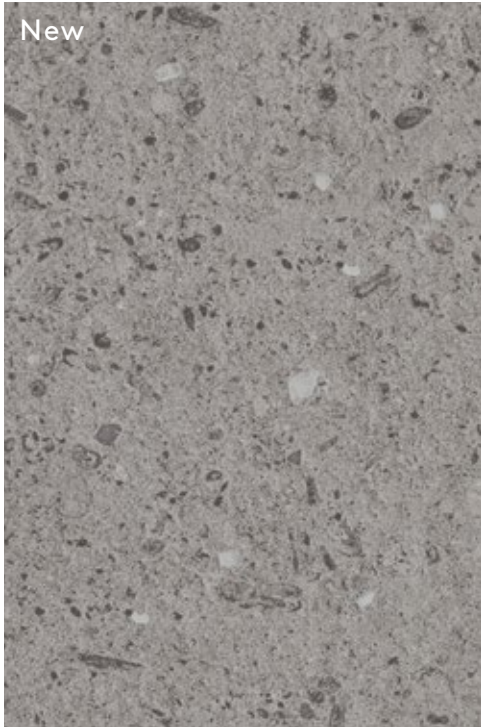


Concrete Formwood

Large swatches are magnified to show the pattern detail.



Manhattan Concrete



Terrace Grey



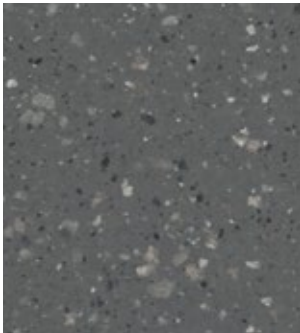
Silver Shalesstone



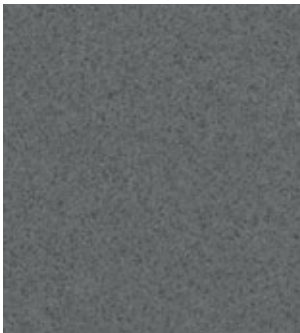
Basalt



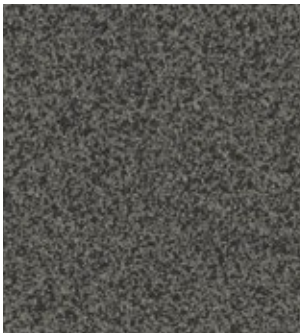
Jordan Stone



Tonal Paper Terrazzo



Raw Nickel



Ironstone

Large swatches are magnified to show the pattern detail.



Veins & Marbles



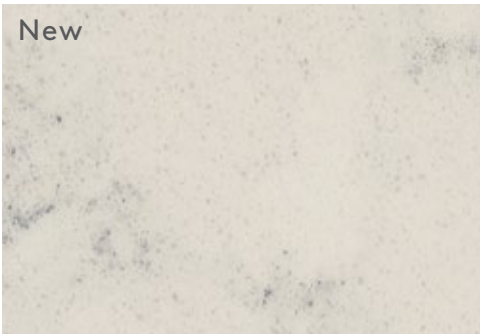
White Valencia



Carrara Bianco



Bianca Luna



Neo Cloud



Carerra Marble



Calacatta Gold



Catalana Marble

Large swatches are magnified to show the pattern detail.

Back Wall Surround by Laminex™ Demi Round 40 painted with Dulux® Lakeside, **Counter** Laminex Formica® Laminate, Calacatta Gold, **Toe kick** Laminex™ Metallic Laminate Brushed Bronze, **Flooring** Laminam® Blend Nero



Carrara Delicata



Pietra Cloud

Swatches shown are a section between 60-80% of a full sheet.

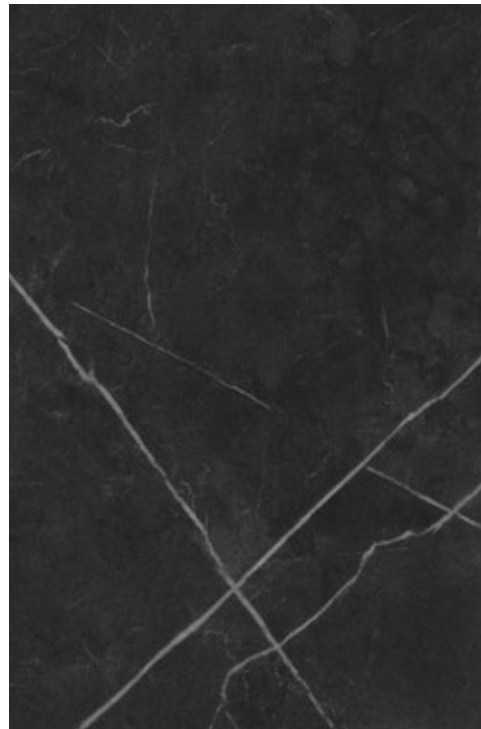


Grigio Grafite

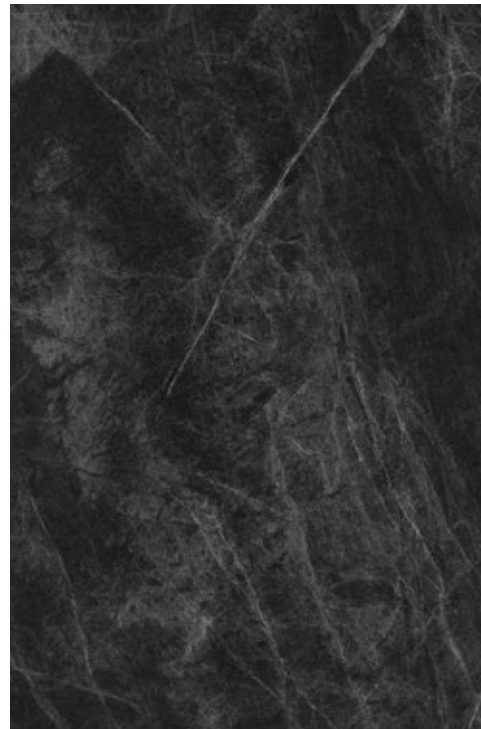


Ferro Grafite

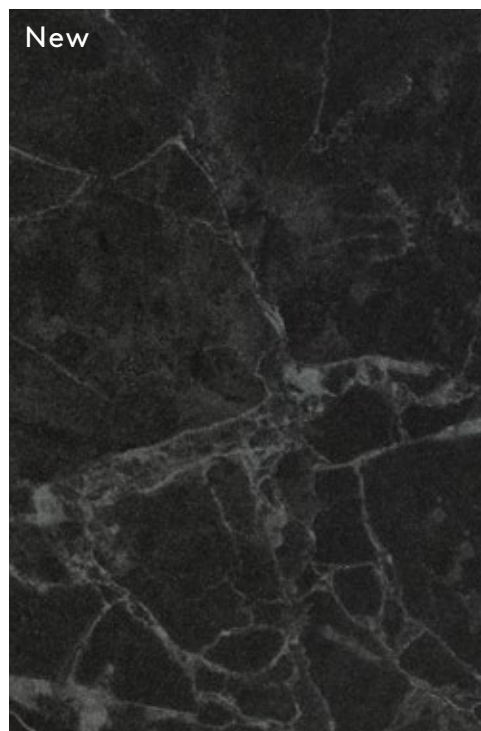
Swatches shown are a section between 60-80% of a full sheet.



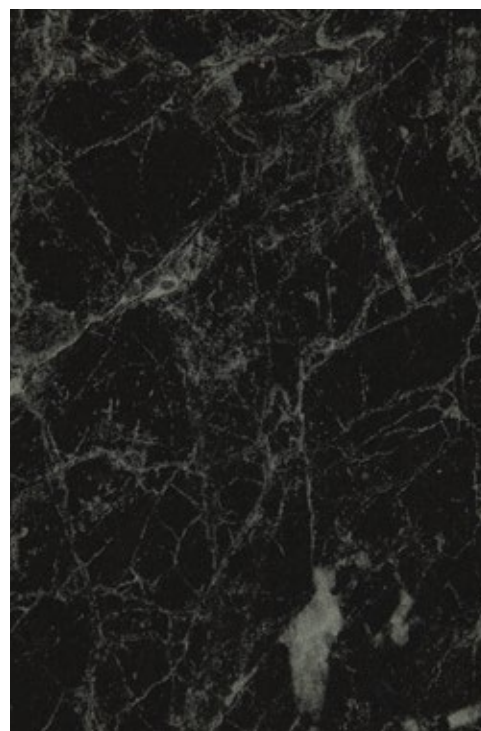
Nero Grafite



Jet Sequoia



Darkside Marble



Black Marble

Large swatches are magnified to
show the pattern detail.

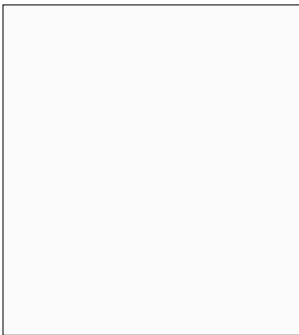


Whites & Solids

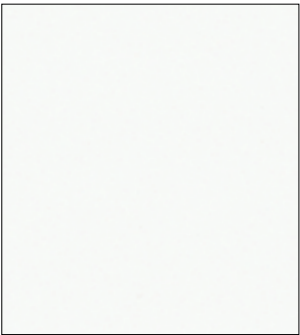
We know design decisions can be challenging. So to help make things easier we have curated a timeless palette of white and neutral laminates that are split into three categories: White Solids, Mid Tone Solids and Dark Tone Solids - in addition to accent décors which you can use to create your own unique interior.

Back wall Laminex Formica® Laminate Platinum Micro, **Shape on wall** Laminex Formica® Laminate Seed, **Front wall** Laminex Formica® Laminate French Cream, **Plinth** Laminex Formica® Laminate Warm White

White Solids



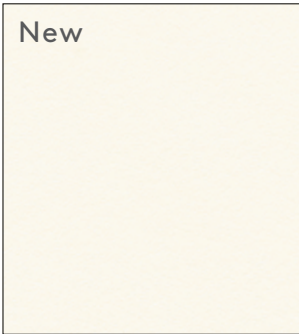
Crystal White



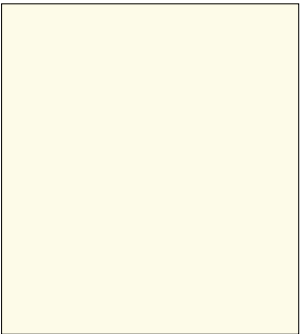
Snowdrift



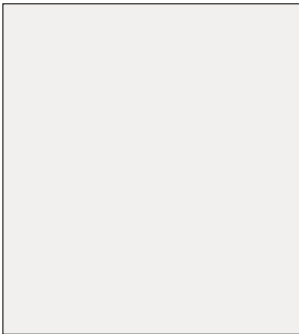
Ghostgum



Gentle Beige



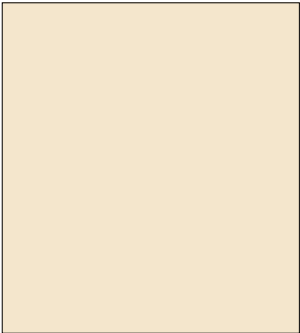
Warm White



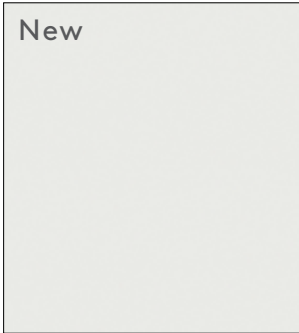
White



Streetlight



French Cream

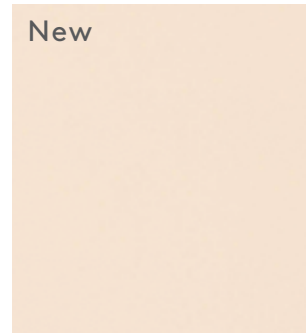


Baikal



Back wall Laminex Formica® Laminate Platinum Micro
and Laminex Formica® Laminate French Cream,
Benchtop Laminex Formica® Laminate Seed

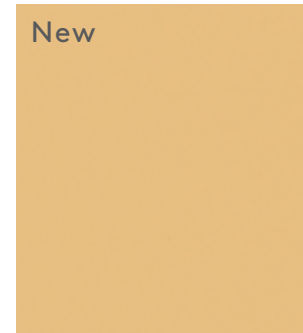
Mid Tone Solids



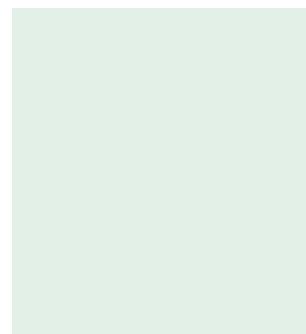
Porcelain Blush



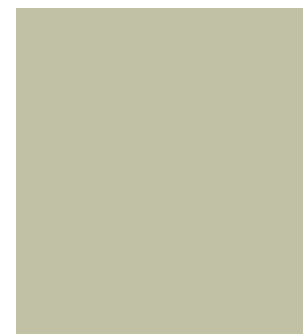
Bliss Shitake



Pale Honey



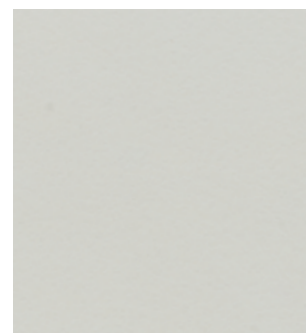
Aquamarine



Seed



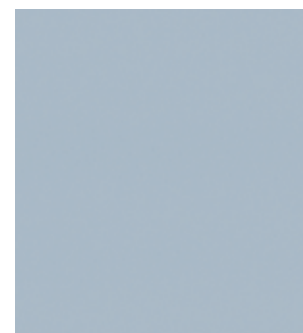
Spinifex



Seal Grey



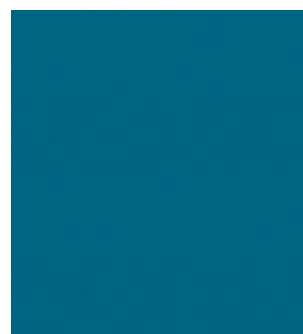
Zincworks



Just Blue



Peacock



Infinity

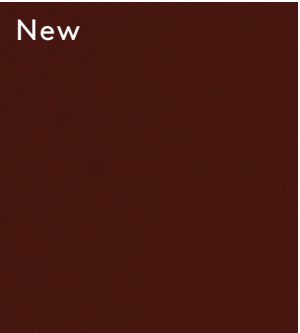




Dark Tone Solids



Burnt Ochre



Kalamata



New Graphite



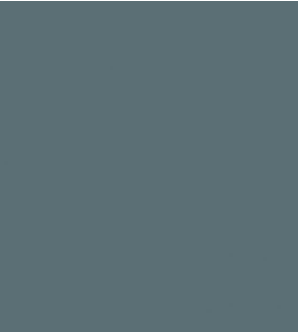
Possum



Moose



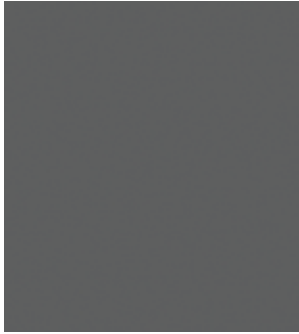
Green Slate



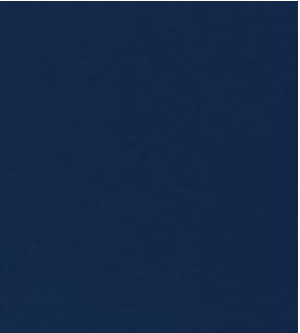
Winter Sky



Fossil



Storm



Blue Moon



Deep Anthracite



Black

Woodgrains

Laminex™ Laminate Woodgrains Collection realistically captures the colours, textures and fibre detail of natural timbers in a surface material that's highly durable, easy to clean and affordable. They are scratch, stain, heat and UV resistant, so they won't age or discolour, as natural timbers can in similar interior applications.

Desk and shelving Laminex Formica® Laminate Natural Walnut,
Benchtop, splashback and wall lining Laminex Formica® Laminate Tumbled Terrazzo,
Cabinetry Melteca® Baikal





Burnished Wood



Black Birchply



Natural Walnut



Oiled Legno

Swatches shown are a section between 60-80% of a full sheet.



Planked Urban Oak



Aged Ash



Sublime Teak



Classic Oak

Swatches shown are a section between 60-80% of a full sheet.



Alaskan



Seasoned Oak



Refined Oak



Rural Oak

Swatches shown are a section between 60-80% of a full sheet.



Wall lining behind bed Laminex Formica® Laminate Seasoned Oak,
Cabinetry Melteca® Seasoned Oak,
Doors Laminex Formica® Laminate Alaskan

Speciality Collection

Laminex™ Laminite Speciality Collection is sophisticated and tactile, bringing a defined and sleek palette to life.

From the elegant, sophisticated, matte finish surface of Alucci™, to the stunning Laminex™ Metallic Laminite capturing the colour and character of real metals, the Speciality Collection is the perfect solution for your next innovative project.

Alucci™

Ground-breaking European innovation that uses high-energy electrons at a controlled rate to cure and create the ultimate smooth and abrasion resistant surface. The result is a surface that delivers superior fingerprint and scratch resistance, coupled with natural silver ion antibacterial protection, to ensure your surface stays looking smarter and cleaner for longer.

Metallics

Laminex™ Metallic Laminite combines the colour and character of real metals with the practical properties of laminite. Created as a texture on top of real metal foils, metallic laminites achieve a textile feel with a crisp touch and low gloss sheen.

Magnetic/ Writeable Laminite

This laminite has a metal foil incorporated between the material surface layers to create the ultimate magnetic hold. Writeable and easy to clean, perfect for vertical applications.

Saturday activities
Rugby
Birthday party

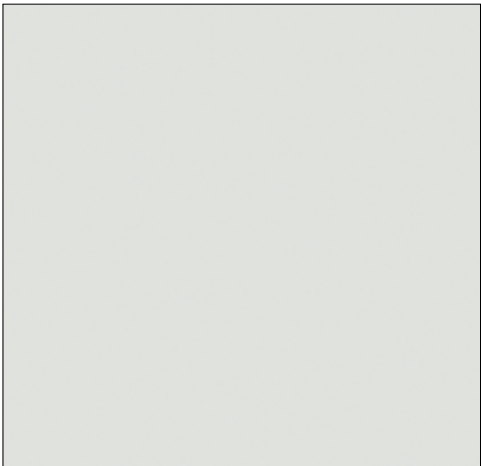
Alucci™

Luxurious Matte Surfaces

This next generation of materials and technology creates a smooth, abrasion and fingerprint resistant surface which ensures it will stay looking smarter and cleaner for longer. In addition, the natural silver ion antibacterial protection makes Alucci™ the complete ultra-matte surface.



Benchtop Alucci™ French Navy, **Wall lining** Alucci™ Oyster Grey



White



Oyster Grey



Green Slate



Stormcloud



French Navy



Black

Metallics

The appeal of sophisticated Laminex™ Metallic Laminate surfaces is timeless. From the classic tones of brushed brass, copper and bronze and the radiant glow of rose-tinted gold, they bring a refined sense of glamour to any interior space. As statement wall panelling, they are brilliant and bold, and as accents, subtle yet surprising.

Vertical use only.

Splashback Laminex™ Metallic Laminate Brushed Aluminium,
Benchtop Laminex Formica® Laminate Black, **Cabinetry** Melteca® Shou Sugi





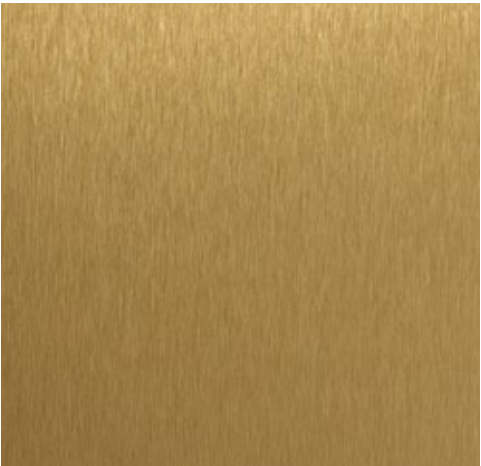
Brushed Aluminium



Polished Aluminium



Matte Rose Gold



Brushed Brass



Brushed Copper



Brushed Bronze

Vertical use only.



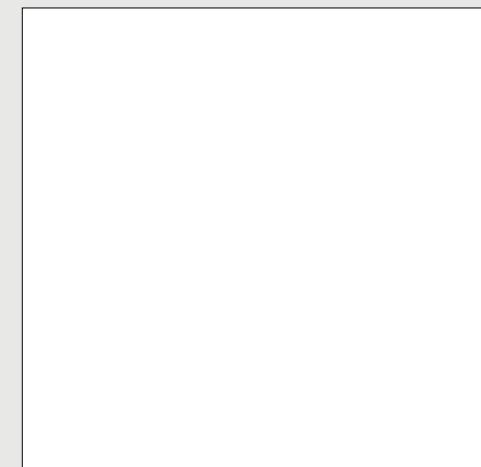
Feature wall Laminex™ Metallic Laminate Brushed Brass,
Benchtop Laminex™ Laminate Ferro Grafite,
Cabinetry Laminex™ Acrylic Panel Pitch Black

Magnetic/ Writeable



Laminex™ Magnetic Laminate Glossy White is ideal for vertical applications such as office whiteboards, interior school walls, partition surfacing, meeting and boardrooms, restaurant menu boards, children's bedrooms and feature walls. Glossy White is a perfect whiteboard surface with a metal foil incorporated between the material surface layers, that ensures magnetic objects will hold strongly to the laminate surface.

Vertical use only.



Glossy White

White board Laminex™ Magnetic Laminate Glossy White,
White board frame Laminex Formica® Laminate Burnished Wood

Design Considerations

High pressure laminates are designed for interior use across an incredibly broad range of applications.

Applications

Ideal for:

- Benchtops
- Vanities
- Cabinetry fronts
- Feature panels
- Internal doors
- Retail furniture
- Bar tops/fronts
- Dining/coffee tables
- Wall linings
- Desktops
- Splashback/upstands



Laminate as a Wall Lining

Laminates are hard-wearing, low maintenance and immensely practical while still retaining aesthetic integrity, making them perfect for partitioning and wall linings. To obtain maximum dimensional stability, laminate sheets need to be pressed on a suitable, quality substrate, such as MDF, Particleboard or good quality Plywood before adhering to the wall.

Note: They are not suitable for wet areas. For wet area application please use Seratone® Aqua.



Joint Options for Wall Lining

To achieve a clean/tidy join between wall panels, we suggest you consider some of the details below. If in doubt, contact your fabricator or joiner on the best option for your specific project requirements.

Aris Butt Joint/Vgroove		Negative Detail		Key
Edged and Butted		Free Form Butted Edge		ABS Edgetape
				Substrate
		Feature Batten		Wall
				Feature Material
Powder Coated Jointers to suit thickness				
<p>Custom aluminium/metal jointer profiles can also be specified for joining sheets and finished edges. Working with your High Pressure Laminate (HPL) fabricator these extrusions can be designed to perfectly suit your application. These jointers are not available from Laminex™.</p>				

Laminate as Furniture

From shop fitouts in retail spaces to impact resistant dining table tops in the hospitality industry to furniture for heavy use areas of a house, Laminex™ Laminate is the ideal choice.



DESIGN CONSIDERATIONS

Laminate as a Splashback

Laminate is a popular option for splashbacks/upstands. With superior cost efficiency, heat resistance, versatility and infinite design possibilities you can achieve a realistic natural stone, timber, concrete or industrial look.

Note: Excludes Metallic Laminate Range.
The laminate needs to be pressed to a suitable substrate and then adhered to the wall.

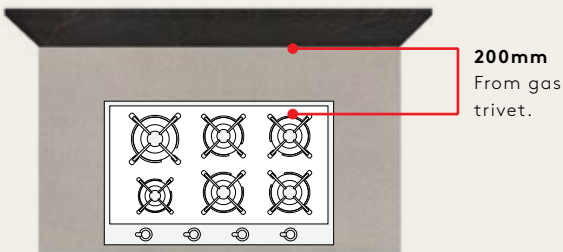


Laminate as a Door

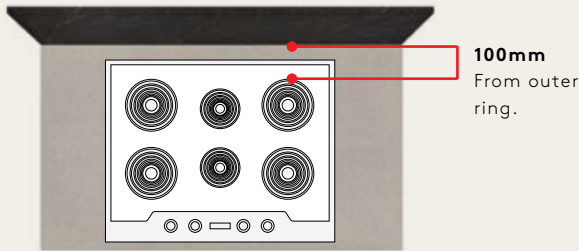
- Laminate used on an interior door needs to be 2 faced as seen from both sides.
- Door edge can be square clashed or edged with ABS edgetape.
- Laminate can be pressed to a prefabricated door or be custom made.
- Laminate has proved its suitability over many years being used as fire doors in commercial environments.
- Laminex™ Laminate has a group 3 Fire Rating.

Splashback Compliance

To meet splashback compliance standards the following distances must be adhered to:



Note: All gas appliance installations must comply with AS/NZS 5601:1: Gas Installations.



Note: All cooktop installations must be in accordance with the cook top manufacturer's instructions.

Gas cooktop.

Laminex™ Laminate can be used as a splashback material behind a gas cooktop provided that it is kept at a distance of at least 200mm from the periphery of the nearest gas ring.

Electric/Induction/Ceramic cooktop.




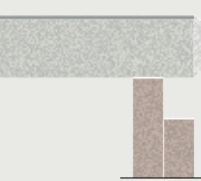



Laminex™ Laminate can be used behind an electric cooktop provided that it is kept at a distance of at least 100mm from the periphery of the nearest heating element.

Note: Same cooktop regulations apply to coved upstands.

Specification Considerations

Edge Profiles

There are a variety of unique profiles available for Laminate benchtop edges including the following:

Key	ABS Edgetape	Waterfall
 Laminate		
 ABS Edgetape		
 Substrate		
 Other Material	Squareform 6mm radius*	Tightform, 8mm,9mm,10mm radius
		Bullnose 180° radius

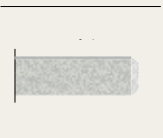
*Refer to availability guide for details on minimum radius for particular colours.

ABS Edge

- Thick and thin looks can be achieved. We recommend the minimum of 25mm thickness.
- Overhang up to 250mm with 25mm profile

ABS edgetape is available to match selected colours, over 90% of the range. Only 1mm thick, ABS edgetape blends with the benchtop disguising the black line edge, creating a seamless look of uninterrupted lines, mimicking the contemporary look often found on more expensive wood, stones, granites and quartz surfaces.

Finishing your benchtop with matching or contrasting ABS edgetape gives you a beautiful square edge without compromising on the overall look. ABS edgetape for benchtops can be specified by colour and in some cases, finish.*

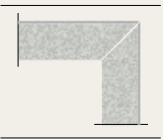


Laminex™ ABS edgetape is available in 53mm width and 1mm thickness. These can be supplied as either unglued or pre-glued.

*Refer to availability guide.

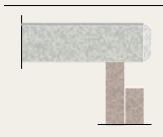
Waterfall

A waterfall profile is made by clashing the benchtop edge with a piece of the same laminate to create a more modern and stylish detail at the end of the bench. The waterfall profile adds interest and dimension giving an overall sleek and minimal look for any kitchen design.



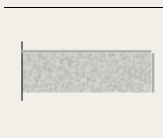
Floating with Negative detailing

A benchtop edge profile creating a floating look giving a contemporary and modern look to any kitchen design.



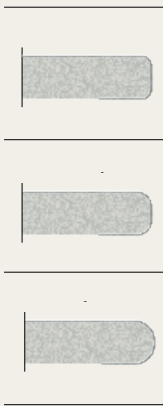
Square Edge

Square edge profile is made by clashing the benchtop edge with a piece of the same laminate to create a true square edge. A traditional laminate look. Depending on the laminate colour, a dark line may be visible.



Rolled Edge

Laminex™ Laminate can be rolled along the length of the laminate to a minimum radius of 8mm for solid colours and 6mm for stones, abstract patterns and woodgrains*. The tighter radius for stone patterns allows for a similar look and finish to a stone benchtop. It is cost effective and extremely hardwearing with good chip and impact resistance. It is also ideal for environments where pointed edges need to be avoided.



*Refer to availability guide for details on minimum radius for particular colours.

Care and Maintenance

Laminex™ Laminate does not easily scratch or chip and will withstand normal wear and tear. They are also stain resistant, therefore easy to clean. The best cleaning agent for laminate surfaces is warm water, mild detergent and a soft cloth*. Full details on care and maintenance can be found on our website: laminex.co.nz

*Note: In certain lights or from different angles wipe down marks may be visible after cleaning.



Island benchtop Laminex™ Laminate Bianca Luna, **Tabletop and floating cabinetry** Laminex Formica® Laminate Seasoned Oak, **Cabinetry under benchtop** Melteca® Possum, **Splashback** Seratone® Aqua Polar White Gloss Herringbone tile, **Rangehood** Laminex™ Metallic Laminate Brushed Aluminium

Finishes

Within the extensive Laminex™/Formica® range there are different finishes.



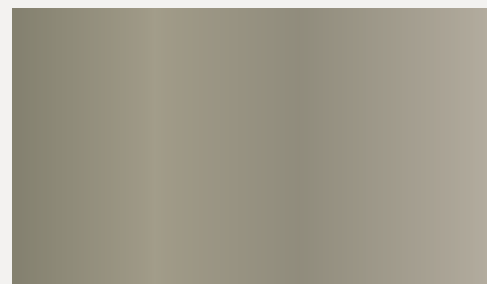
Natural

A low sheen, smooth touch surface that is a durable and low maintenance option for benchtops and surfaces.



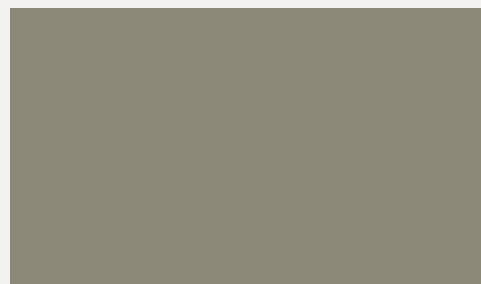
Velour

The most popular finish in the Laminex™ Laminite/Formica® range. A velour finish that delivers a clean and modern look.



Gloss Plus

Laminex™ Laminite/Formica® Gloss Plus is a superior high gloss finish, with abrasion and scuff resistance.



Matte

Laminex™ Laminite/Formica® matte finish is tactile and fingerprint-resistant making it inviting to the touch.



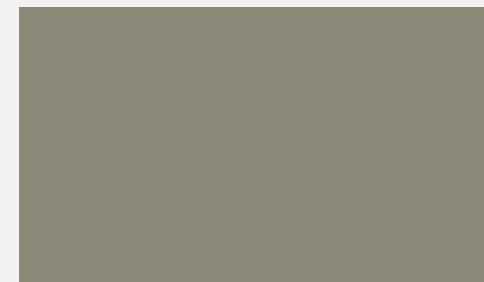
Metallic

Combining the colour and character of real metals with the practical properties of laminate.



Puregrain™

A timeless yet unique interpretation of a brushed, natural timber, that provides a natural looking and highly tactile surface.



Satin

An exceptionally flat soft finish that adds a touch of class to any modern décor, with a low light reflection and inspired by natural, unpolished marble.



Paper

Paper finish is a textured, organic finish with the hand-made appearance of recycled paper. This distinctive finish is the result of small-batch craft production using fragments of reclaimed paper.

Dark, satin and high gloss colours are more likely to highlight finger marking and wear and tear therefore careful consideration should be taken when selecting these colours for harshly lit or high use areas. Lighter colours are more tolerant in harshly lit environments.

Not all décors are available in more than one finish.

Note: For each individual décor finish refer to the availability guide or full range colour swatch section. We recommend viewing large patterns in full size sheets. Visit laminex.co.nz to download full sheet imagery.

UV gloss has been used to give an example of the texture of the finish only. Please view physical sample for accurate colour and finish representation. To order samples visit laminex.co.nz

Laminates Complete Colour Range

Minerals & Marbles

Pure Mineralstone GP • ME	Sand Pebble N • ME	White Kashmir GP • ME	Amaretto Stone V • ME	White Finestone V • ME
Grey Finestone V • ME	Kashmir Granite N • ME	Flint Crystal V • ME	Flinders Black V • ME	Flinders Black GP • ME
Black Sky V • ME	Pearl Concrete N • ME	White Cement V • ME	Granular Limestone V • ME	Elemental Ash N • ME
Platinum Micro N • ME	Tinted Paper Terrazzo P • ME	Limed Concrete N • ME	Terrace Pearl V • ME	Concrete Formwood N • ME
Tumbled Terrazzo N • ME	Manhattan Concrete N • ME	Terrace Grey V • ME	Silver Shalesstone V • ME	Basalt N • ME

Jordan Stone N • ME	Tonal Paper Terrazzo P • ME	Raw Nickel N • ME	Ironstone V • ME	White Valencia N • ME
White Valencia GP • ME	Calacatta Gold V • ME	Bianca Luna M • ME	Bianca Luna GP • ME	Catalana Marble N • ME
Neo Cloud N • ME	Carerra Marble GP • ME	Carerra Marble M • ME	Carrara Bianco N • ME	Carrara Delicata N • ME
Pietra Cloud N • ME	Grigio Grafite N • ME	Ferro Grafite GP • ME	Ferro Grafite S • ME	Nero Grafite N • ME
Jet Sequoia M • ME	Jet Sequoia GP • ME	Darkside Marble V • ME	Black Marble N • ME	
Whites & Solids				
Snowdrift V • ME	Ghostgum N • ME	Gentle Beige V • ME	Warm White V • ME	White N • ME

New

MM

Streetlight

V • ME

New

MM

Baikal

V • ME

French Cream

N • ME

New

MM

Porcelain Blush

N • ME

Aquamarine

N • ME

Seal Grey

V • ME

New

MM

Pale Honey

N • ME

Zincworks

N • ME

Seed

N • ME

Bliss Shitake

V • ME

Spinifex

N • ME

Just Blue

V

Peacock

N

Infinity

N

Possum

N • ME

Moose

N • ME

New

MM

Burnt Ochre

N • ME

Green Slate

N • ME

Winter Sky

N • ME

New Graphite

N • ME

Fossil

N • ME

Storm

V • ME

Blue Moon

V

New

MM

Kalamata

N • ME

Deep Anthracite

V • ME

Black

V • ME

Woodgrains

Alaskan

N • ME

New

MM

Classic Oak

N • ME

Refined Oak

V • ME

Rural Oak

N • ME

Seasoned Oak

N • ME

Sublime Teak

N • ME

New Finish

MM

Aged Ash

N • ME

MM

Planked Urban Oak

V • ME

New

N • ME

Natural Walnut

New Finish

MM

Oiled Legno

N • ME

New

MM

Black Birchply

PU • ME

MM

Burnished Wood

PU • ME

Alucci™

White

M • ME

Oyster Grey

M • ME

Green Slate

M • ME

Stormcloud

M • ME

French Navy

M • ME

Black

M • ME

Metallics

Vertical use only.

Brushed Aluminium

Met

Polished Aluminium

Met

Matte Rose Gold

Met

Brushed Brass

Met

Brushed Copper

Met

Brushed Bronze

Met

Magnetic

Vertical use only.

Glossy White

GP

Finish

- Natural • N

Velour • V

Gloss Plus • GP
- Matte • M

Satin • S

Metallic • Met
- Puregrain • PU

Matching Edgetape • ME
- Paper • P

Melteca® Match • MM

Order Samples

Samples are available across our entire range. Visit laminex.co.nz to order your samples today.

Visit us
laminex.co.nz

Call us
0800 999 939



Wall lining Alucci™ Green Slate, Benchtop Alucci™ White

Availability Guide


Décor	Finish	Range	Full Sheet Size	ABS Edgetape Match
Aged Ash	Natural	Classic Laminate	3600x1500	53mm x 1mm
Alaskan	Natural	Classic Laminate	3600x1500	53mm x 1mm
Amaretto Stone	Velour	Classic Laminate	3600x1500	53mm x 1mm
Aquamarine	Natural	Classic Laminate	3600x1500	53mm x 1mm
Baikal	Velour	Classic Laminate	3600x1500	53mm x 1mm
Basalt	Natural	Classic Laminate	3600x1500	53mm x 1mm
Bianca Luna	Matte	Classic Laminate	3595x1395	53mm x 1mm
Bianca Luna	Gloss Plus	Classic Laminate	3595x1395	53mm x 1mm
Black	Velour	Classic Laminate	3600x1500	53mm x 1mm
Black Birch ply	Natural	Classic Laminate	3600x1500	53mm x 1mm
Black Marble	Natural	Classic Laminate	3600x1500	53mm x 1mm
Black Sky	Velour	Classic Laminate	3600x1500	53mm x 1mm
Bliss Shitake	Velour	Classic Laminate	3600x1500	53mm x 1mm
Blue Moon	Velour	Classic Laminate	3600x1500	No edgetape available
Burnished Wood	Puregrain	Classic Laminate	3600x1500	53mm x 1mm
Burnt Ochre	Natural	Classic Laminate	3600x1500	53mm x 1mm
Calacatta Gold	Velour	Classic Laminate	3600x1500	53mm x 1mm
Carerra Marble	Gloss Plus	Classic Laminate	3595x1395	53mm x 1mm
Carerra Marble	Matte	Classic Laminate	3595x1395	53mm x 1mm
Carrara Bianco	Natural	Classic Laminate	3600x1500	53mm x 1mm
Carrara Delicata	Natural	Classic Laminate	3600x1500	53mm x 1mm
Catalana Marble	Natural	Classic Laminate	3600x1500	53mm x 1mm
Classic Oak	Natural	Classic Laminate	3600x1500	53mm x 1mm
Cocoa Sand	Velour	Classic Laminate	3600x1500	53mm x 1mm
Concrete Formwood	Natural	Classic Laminate	3600x1500	53mm x 1mm
Crystal White	Gloss Plus	Classic Laminate	3595x1395	53mm x 1mm
Crystal White	Velour	Classic Laminate	3595x1395	53mm x 1mm
Darkside Marble	Velour	Classic Laminate	3600x1500	53mm x 1mm
Deep Anthracite	Velour	Classic Laminate	3600x1500	53mm x 1mm
Elemental Ash	Natural	Classic Laminate	3600x1500	53mm x 1mm
Ferro Grafite	Gloss Plus	Classic Laminate	3595x1395	53mm x 1mm
Ferro Grafite	Satin	Classic Laminate	3595x1395	53mm x 1mm
Flinders Black	Gloss Plus	Classic Laminate	3595x1395	53mm x 1mm
Flinders Black	Velour	Classic Laminate	3600x1500	53mm x 1mm
Flint Crystal	Velour	Classic Laminate	3600x1500	53mm x 1mm
Fossil	Natural	Classic Laminate	3600x1500	53mm x 1mm
French Cream	Natural	Classic Laminate	3600x1500	53mm x 1mm

Antimicrobial	Melteca® Match	Minimum Postforming Radius	Cut Sheets Available: Half Sheet	Cut Sheets Available: Quarter Sheet
Yes	Yes	6mm	✓	✓
Yes	Yes	6mm	✓	✓
Yes	No	6mm	✓	✓
Yes	No	10 mm	✓	✓
Yes	Yes	10mm	✓	✓
Yes	No	6mm	✓	✓
No	No	8mm	✓	
No	No	8mm	✓	
Yes	Yes	10mm	✓	✓
Yes	Yes	6mm	✓	✓
No	No	6mm	✓	✓
Yes	No	6mm	✓	✓
Yes	Yes	6mm	✓	✓
Yes	No	6mm	✓	✓
Yes	Yes	6mm	✓	✓
Yes	No	6mm	✓	✓
Yes	Yes	10mm	✓	✓
Yes	No	8mm	✓	
No	No	8mm	✓	
Yes	No	6mm	✓	✓
Yes	No	8mm	✓	✓
Yes	No	8mm	✓	✓
Yes	Yes	6mm	✓	✓
Yes	No	6mm	✓	✓
Yes	No	6mm	✓	✓
No	No	8mm	✓	✓
No	No	10mm	✓	✓
Yes	No	6mm	✓	✓
Yes	No	10mm	✓	✓
Yes	No	8mm	✓	✓
No	No	8mm	✓	
No	No	8mm	✓	
No	No	8mm	✓	✓
Yes	No	6mm	✓	✓
Yes	No	8mm	✓	✓
Yes	No	8 mm	✓	✓

Décor	Finish	Range	Full Sheet Size	ABS Edgetape Match
Fresh Snow	Natural	Classic Laminate	3600x1500	53mm x 1mm
Gentle Beige	Velour	Classic Laminate	3600x1500	53mm x 1mm
GhostGum	Natural	Classic Laminate	3600x1500	53mm x 1mm
Granular Limestone	Velour	Classic Laminate	3600x1500	53mm x 1mm
Green Slate	Natural	Classic Laminate	3600x1500	53mm x 1mm
Grey Finestone	Velour	Classic Laminate	3600x1500	53mm x 1mm
Grigio Grafite	Natural	Classic Laminate	3600x1500	53mm x 1mm
Infinity	Natural	Classic Laminate	3600x1500	No edgetape available
Ironstone	Velour	Classic Laminate	3600x1500	53mm x 1mm
Jet Sequoia	Gloss Plus	Classic Laminate	3595x1395	53mm x 1mm
Jet Sequoia	Matte	Classic Laminate	3595x1395	53mm x 1mm
Jordan Stone	Natural	Classic Laminate	3600x1500	53mm x 1mm
Just Blue	Velour	Classic Laminate	3600x1500	No edgetape available
Kalamata	Natural	Classic Laminate	3600x1500	53mm x 1mm
Kashmir Granite	Natural	Classic Laminate	3600x1500	53mm x 1mm
Limed Concrete	Natural	Classic Laminate	3600x1500	53mm x 1mm
Manhattan Concrete	Natural	Classic Laminate	3600x1500	53mm x 1mm
Moose	Natural	Classic Laminate	3600x1500	53mm x 1mm
Natural Walnut	Natural	Classic Laminate	3600x1500	53mm x 1mm
Neo Cloud	Natural	Classic Laminate	3600x1500	53mm x 1mm
Nero Grafite	Natural	Classic Laminate	3600x1500	53mm x 1mm
New Graphite	Natural	Classic Laminate	3600x1500	53mm x 1mm
Oiled Legno	Natural	Classic Laminate	3600x1500	53mm x 1mm
Pale Honey	Natural	Classic Laminate	3600x1500	53mm x 1mm
Peacock	Natural	Classic Laminate	3600x1200	No edgetape available
Pearl Concrete	Natural	Classic Laminate	3600x1500	53mm x 1mm
Pietra Cloud	Natural	Classic Laminate	3600x1500	53mm x 1mm
Planked Urban Oak	Velour	Classic Laminate	3600x1500	53mm x 1mm
Platinum Micro	Natural	Classic Laminate	3600x1500	53mm x 1mm
Porcelain Blush	Natural	Classic Laminate	3600x1500	53mm x 1mm
Possum	Natural	Classic Laminate	3600x1500	53mm x 1mm
Pure Mineralstone II	Gloss Plus	Classic Laminate	3595x1395	53mm x 1mm
Pure Mineralstone II	Natural	Classic Laminate	3600x1500	53mm x 1mm
Raw Nickel	Natural	Classic Laminate	3600x1500	53mm x 1mm
Refined Oak	Velour	Classic Laminate	3600x1500	53mm x 1mm
Rural Oak	Natural	Classic Laminate	3600x1500	53mm x 1mm
Sand Pebble	Natural	Classic Laminate	3600x1500	53mm x 1mm

Antimicrobial	Melteca® Match	Minimum Postforming Radius	Cut Sheets Available: Half Sheet	Cut Sheets Available: Quarter Sheet
Yes	No	6mm	✓	✓
Yes	Yes	10mm	✓	✓
Yes	No	10mm	✓	✓
Yes	No	6mm	✓	✓
Yes	Yes	10 mm	✓	✓
Yes	No	6mm	✓	✓
Yes	No	8mm	✓	✓
Yes	No	8mm	✓	✓
Yes	Yes	6mm	✓	✓
No	No	8mm	✓	
No	No	8mm	✓	
Yes	No	6mm	✓	✓
Yes	No	10mm	✓	✓
Yes	No	10mm	✓	✓
Yes	No	6mm	✓	✓
Yes	No	6 mm	✓	✓
Yes	No	6mm	✓	✓
Yes	No	6mm	✓	✓
Yes	No	6mm	✓	✓
Yes	No	6 mm	✓	✓
Yes	Yes	6mm	✓	✓
Yes	Yes	6mm	✓	✓
Yes	No	10mm	✓	✓
Yes	No	8mm	✓	✓
Yes	No	6mm	✓	✓
Yes	No	6mm	✓	✓
No	Yes	6mm	✓	✓
Yes	No	6mm	✓	✓
Yes	Yes	10mm	✓	✓
Yes	Yes	8 mm	✓	✓
No	No	8 mm	✓	✓
Yes	No	6 mm	✓	✓
Yes	No	6 mm	✓	✓
Yes	Yes	6mm	✓	✓
Yes	Yes	6mm	✓	✓
Yes	No	6mm	✓	✓

Décor	Finish	Range	Full Sheet Size	ABS Edgetape Match
Seal Grey	Velour	Classic Laminate	3600x1500	53mm x 1mm
Seasoned Oak	Natural	Classic Laminate	3600x1500	53mm x 1mm
Seed	Natural	Classic Laminate	3600x1500	53mm x 1mm
Silver Shalestone	Velour	Classic Laminate	3600x1500	53mm x 1mm
Snowdrift	Velour	Classic Laminate	3600x1500	53mm x 1mm
Snowdrift	Gloss Plus	Classic Laminate	3595x1395	53mm x 1mm
Spinifex	Natural	Classic Laminate	3600x1500	53mm x 1mm
Storm	Velour	Classic Laminate	3600x1500	53mm x 1mm
Streetlight	Velour	Classic Laminate	3600x1500	53mm x 1mm
Sublime Teak	Natural	Classic Laminate	3600x1500	53mm x 1mm
Terrace Grey	Velour	Classic Laminate	3600x1500	53mm x 1mm
Terrace Pearl	Velour	Classic Laminate	3600x1500	53mm x 1mm
Tinted Paper Terrazzo	Paper	Classic Laminate	3600x1500	53mm x 1mm
Tonal Paper Terrazzo	Paper	Classic Laminate	3600x1500	53mm x 1mm
Tumbled Terrazzo	Natural	Classic Laminate	3600x1500	53mm x 1mm
Warm White	Velour	Classic Laminate	3600x1500	53mm x 1mm
White	Natural	Classic Laminate	3600x1500	53mm x 1mm
White Cement	Velour	Classic Laminate	3600x1500	53mm x 1mm
White Finestone	Velour	Classic Laminate	3600x1500	53mm x 1mm
White Kashmir	Gloss Plus	Classic Laminate	3595x1395	53mm x 1mm
White Valencia	Gloss Plus	Classic Laminate	3595x1395	53mm x 1mm
White Valencia	Natural	Classic Laminate	3600x1500	53mm x 1mm
Winter Sky	Natural	Classic Laminate	3600x1500	53mm x 1mm
Zincworks	Natural	Classic Laminate	3600x1500	53mm x 1mm
Black	Matte	Alucci Apex	3600x1500	42mm x 1mm
French Navy	Matte	Alucci Apex	3600x1500	42mm x 1mm
Green Slate	Matte	Alucci Apex	3600x1500	42mm x 1mm
Oyster Grey	Matte	Alucci Apex	3600x1500	42mm x 1mm
Stormcloud	Matte	Alucci Apex	3600x1500	42mm x 1mm
White	Matte	Alucci Apex	3600x1500	42mm x 1mm
Brushed Aluminium 	Metallic	DecoMetal	2440x1220	No edgetape available
Brushed Brass 	Metallic	DecoMetal	2440x1220	No edgetape available
Brushed Bronze 	Metallic	DecoMetal	2440x1220	No edgetape available
Brushed Copper 	Metallic	DecoMetal	2440x1220	No edgetape available
Matte Rose Gold 	Metallic	DecoMetal	2440x1220	No edgetape available
Polished Aluminium 	Metallic	DecoMetal	2440x1220	No edgetape available
Glossy White	Gloss	Magnetic HPL	2440x1220; 3050x1220	No edgetape available

 Cut Sheets Available: Toe Kick/Vertical Use Only

Antimicrobial	Melteca® Match	Minimium Postforming Radius	Cut Sheets Available: Half Sheet	Cut Sheets Available: Quarter Sheet
Yes	Yes	8mm	✓	✓
Yes	Yes	6mm	✓	✓
Yes	No	10 mm	✓	✓
Yes	No	8mm	✓	✓
Yes	Yes	8mm	✓	✓
No	Yes	8mm	✓	✓
Yes	Yes	8 mm	✓	✓
Yes	Yes	10mm	✓	✓
Yes	Yes	10mm	✓	✓
Yes	Yes	6mm	✓	✓
Yes	No	8mm	✓	✓
Yes	No	8mm	✓	✓
No	No	Non postformable	✓	✓
No	No	Non postformable	✓	✓
Yes	No	8mm	✓	✓
Yes	Yes	10mm	✓	✓
Yes	No	8mm	✓	✓
Yes	No	6mm	✓	✓
Yes	No	6mm	✓	✓
No	No	8mm	✓	✓
No	No	8mm	✓	✓
Yes	No	6mm	✓	✓
Yes	Yes	10 mm	✓	✓
Yes	Yes	6mm	✓	✓
Yes	No	Non postformable	✓	
Yes	No	Non postformable	✓	
Yes	No	Non postformable	✓	
Yes	No	Non postformable	✓	
Yes	No	Non postformable	✓	
Yes	No	Non postformable	✓	
Yes	No	Non postformable	✓	
No	No	Non postformable		
No	No	Non postformable		
No	No	Non postformable		
No	No	Non postformable		
No	No	Non postformable		
No	No	Non postformable		
No	No	Non postformable		

Laminex™
Laminate



Visit us

laminex.co.nz

Call us

0800 303 606

Samples

laminex.co.nz
or 0800 999 939

Follow US

 @laminexnz

 @nzlaminex

Cover Image: Kitchen island benchtop, back benchtop and splashback Laminex Formica® Laminate Pietra Cloud, Top cabinetry Melteca® Snowdrift, Curved base of kitchen island Laminex Formica® Laminate Snowdrift.

The colours of the photographs and swatches depicted in this brochure are as close to the Laminex™ Laminates range as modern photographic, lighting and printing processes allow. The colour/finish combinations shown are available at the time of publication, but are subject to availability and may be withdrawn at any time. Laminex™ Laminates is no different from any other material in that darker colours and gloss finishes will always show scratches and superficial wear and tear more readily than lighter colours or lower gloss finishes. Such surfaces require more care and maintenance and Laminex New Zealand™ recommends the use of laminate cleaning products (or mild household cleaning products). Please visit our website, laminex.co.nz, for specific care and cleaning information. Note that in certain lights or from different angles wipe down marks may be visible after cleaning. Laminex™ Laminates should be protected from strong direct sunlight as continuous exposure may cause discolouration or fading to the surface over time. Please obtain a copy of the terms and conditions of the Laminex™ Laminates 7 Year Limited Warranty from Laminex New Zealand™ or visit laminex.co.nz. This warranty is in addition to any rights that may exist under the Consumer Guarantees Act (1993). J009752 02/22

This publication is printed using vegetable based inks and environmentally responsible papers.

©Copyright reserved 2022, Laminex New Zealand™. Laminex™ and Laminex New Zealand™ are registered trademarks of Fletcher Building Holdings Ltd and used under licence by Laminex New Zealand™, a division of Fletcher Building Products Ltd. Formica® is marketed and distributed by Laminex New Zealand™, a division of Fletcher Building Products Limited. Formica®, and Laminex New Zealand™ are registered trademarks of Laminex New Zealand™ or its related company licensors.

Laminex™
NEW ZEALAND