

# Laminex™ Laminate

Design Guide



**Laminex™**  
NEW ZEALAND

# Contents

---

- 1. Design Considerations**
- 1. Applications**
  - 2. Laminate as a wall Lining
  - 2. Joint Options for Wall Lining
  - 3. Laminate as Furniture
  - 3. Laminate as a Door
  - 4. Laminate as a Splashback
- 5. Design Specifications**
- 6. Edge Profiles**
  - 6. ABS Edge
  - 6. Waterfall
  - 7. Floating with Negative detailing
  - 7. Square Edge
  - 7. Rolled Edge
- 8. Care and Maintenance**
- 9. Finishes**
- 11. Features and Benefits**

# Design Considerations

**High pressure laminates are designed for interior use across an incredibly broad range of applications.**

## Applications

### Ideal for:

- Benchtops
- Vanities
- Cabinetry fronts
- Feature panels
- Internal doors
- Retail furniture
- Bar tops/fronts
- Dining/coffee tables
- Wall linings
- Desktops
- Splashback/upstands







# Laminate as a Wall Lining

Laminates are hard-wearing, low maintenance and immensely practical while still retaining aesthetic integrity, making them perfect for partitioning and wall linings. To obtain maximum dimensional stability, laminate sheets need to be pressed on a suitable, quality substrate, such as MDF, Particleboard or good quality Plywood before adhering to the wall.

Note: They are not suitable for wet areas. For wet area application please use Seratone® Aqua.

## Joint Options for Wall Lining

To achieve a clean/tidy join between wall panels, we suggest you consider some of the details below. If in doubt, contact your fabricator or joiner on the best option for your specific project requirements.

Aris Butt Joint/Vgroove		Negative Detail		Key
Edged and Butted	Free Form Butted Edge	Feature Batten		
Powder Coated Jointers to suit thickness				
<p>Custom aluminium/metal jointer profiles can also be specified for joining sheets and finished edges. Working with your High Pressure Laminate (HPL) fabricator these extrusions can be designed to perfectly suit your application.</p> <p>These jointers are not available from Laminex™.</p>				



## Laminate as Furniture

From shop fitouts in retail spaces to impact resistant dining table tops in the hospitality industry to furniture for heavy use areas of a house, Laminex™ Laminate is the ideal choice.



## Laminate as a Door

- Laminate used on an interior door needs to be 2 faced as seen from both sides.
- Door edge can be square edged or edged with ABS edgetape.
- Laminate can be pressed to a prefabricated door or be custom made.
- Laminate has proved its suitability over many years being used as fire doors in commercial environments.
- Laminex™ Laminate has a group 3 Fire Rating.



## Laminate as a Splashback

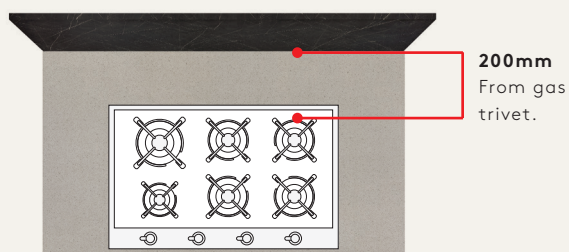
Laminate is a popular option for splashbacks/upstands. With superior cost efficiency, heat resistance, versatility and infinite design possibilities you can achieve a realistic natural stone, timber, concrete or industrial look.

**Note:** Excludes Metallic Laminate Range. The laminate needs to be pressed to a suitable substrate and then adhered to the wall.

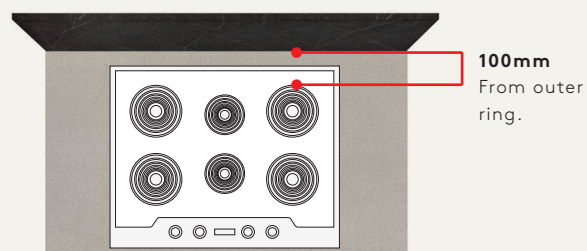


## Splashback Compliance

To meet splashback compliance standards the following distances must be adhered to:



**Note:** All gas appliance installations must comply with AS/NZS 5601:1: Gas Installations.



**Note:** All cooktop installations must be in accordance with the cook top manufacturer's instructions.

### Gas cooktop.

Laminex™ Laminex can be used as a splashback material behind a gas cooktop provided that it is kept at a distance of at least 200mm from the periphery of the nearest gas ring.

### Electric/Induction/Ceramic cooktop.

Laminex™ Laminex can be used behind an electric cooktop provided that it is kept at a distance of at least 100mm from the periphery of the nearest heating element.

**Note:** Same cooktop regulations apply to covered upstands.

# Specification Considerations

## Edge Profiles

There are a variety of unique profiles available for Laminate benchtop edges including the following:



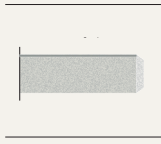


## ABS Edge

- Thick and thin looks can be achieved. We recommend the minimum of 25mm thickness.
- Overhang up to 250mm with 25mm profile

ABS edgetape is available to match selected colours, over 90% of the range. Only 1mm thick, ABS edgetape blends with the benchtop disguising the black line edge, creating a seamless look of uninterrupted lines, mimicking the contemporary look often found on more expensive wood, stones, granites and quartz surfaces.

Finishing your benchtop with matching or contrasting ABS edgetape gives you a beautiful square edge without compromising on the overall look. ABS edgetape for benchtops can be specified by colour and in some cases, finish.\*

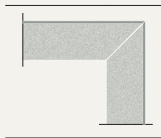


**Laminex™ ABS edgetape is available in 53mm width and 1mm thickness. These can be supplied as either unglued or pre-glued.**

\*Refer to availability guide.

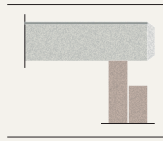
## Waterfall

A waterfall profile is made by clashing the benchtop edge with a piece of the same laminate to create a more modern and stylish detail at the end of the bench. The waterfall profile adds interest and dimension giving an overall sleek and minimal look for any kitchen design.



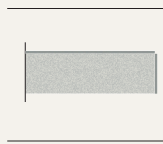
## Floating with Negative detailing

A benchtop edge profile creating a floating look giving a contemporary and modern look to any kitchen design.



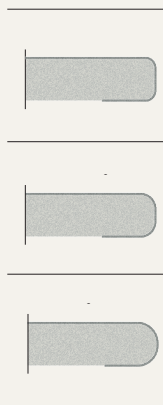
## Square Edge

Square edge profile is made by clashing the benchtop edge with a piece of the same laminate to create a true square edge. A traditional laminate look. Depending on the laminate colour, a dark line may be visible.



## Rolled Edge

Laminex™ Laminate can be rolled along the length of the laminate to a minimum radius of 8mm for solid colours and 6mm for stones, abstract patterns and woodgrains\*. The tighter radius for stone patterns allows for a similar look and finish to a stone benchtop. It is cost effective and extremely hardwearing with good chip and impact resistance. It is also ideal for environments where pointed edges need to be avoided.



\*Refer to availability guide for details on minimum radius for particular colours.



# Care and Maintenance

Laminex™ Laminate does not easily scratch or chip and will withstand normal wear and tear. They are also stain resistant, therefore easy to clean. The best cleaning agent for laminate surfaces is warm water, mild detergent and a soft cloth\*. Full details on care and maintenance can be found on our website: [laminex.co.nz](http://laminex.co.nz)

\*Note: In certain lights or from different angles wipe down marks may be visible after cleaning.



**Island benchtop** Laminex™ Laminate Bianca Luna, **Tabletop and floating cabinetry** Laminex Formica® Laminate Seasoned Oak, **Cabinetry under benchtop** Melteca® Possum, **Splashback** Seratone® Aqua Polar White Gloss Herringbone tile, **Rangehood** Laminex™ Metallic Laminate Brushed Aluminium



# Finishes

Within the extensive Laminex™/Formica® range there are different finishes.



## Natural

A low sheen, smooth touch surface that is a durable and low maintenance option for benchtops and surfaces.



## Velour

The most popular finish in the Laminex™ Laminate/Formica® range. A velour finish that delivers a clean and modern look.



## Gloss Plus

Laminex™ Laminate/Formica® Gloss Plus is a superior high gloss finish, with abrasion and scuff resistance.



## Matte

Laminex™ Laminate/Formica® matte finish is tactile and fingerprint-resistant making it inviting to the touch.



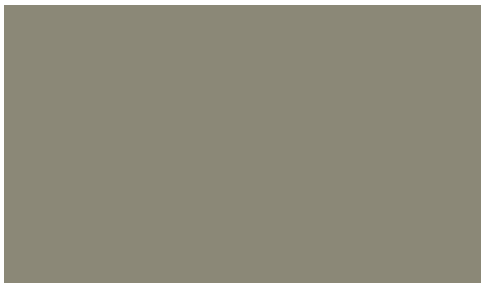
## Metallic

Combining the colour and character of real metals with the practical properties of laminate.



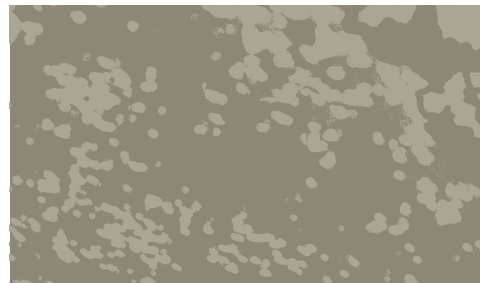
## Puregrain™

A timeless yet unique interpretation of a brushed, natural timber, that provides a natural looking and highly tactile surface.



## Satin

An exceptionally flat soft finish that adds a touch of class to any modern décor, with a low light reflection and inspired by natural, unpolished marble.



## Paper

Paper finish is a textured, organic finish with the hand-made appearance of recycled paper. This distinctive finish is the result of small-batch craft production using fragments of reclaimed paper.

Dark, satin and high gloss colours are more likely to highlight finger marking and wear and tear therefore careful consideration should be taken when selecting these colours for harshly lit or high use areas. Lighter colours are more tolerant in harshly lit environments.

**Not all décors are available in more than one finish.**

**Note:** For each individual décor finish refer to the availability guide or full range colour swatch section. We recommend viewing large patterns in full size sheets. Visit [laminex.co.nz](http://laminex.co.nz) to download full sheet imagery.

UV gloss has been used to give an example of the texture of the finish only. Please view physical sample for accurate colour and finish representation. To order samples visit [laminex.co.nz](http://laminex.co.nz)

# Features and Benefits



## Matching ABS Edgetape

ABS Edgetape has a thickness of 1mm which disguises the black line edge, creating a seamless pattern and colour.

- Matches the colour of the laminate.
- Easy to apply post pressing.
- Non-toxic.
- Available across 90% of the range.
- Please refer to availability guide.



## Antimicrobial

Selected décors within the range have antimicrobial properties meaning it helps fight germs, making it perfect for keeping food safe.

- Innovative surface that inhibits the growth of bacteria and fungi.
- Independently tested for antibacterial and antifungal efficiency in accordance with ISO22196:2011, JIS Z2801 and ASTM G21.
- Available across 75% of the Laminex™ Laminate range.
- Please refer to availability guide.



Easy to  
Clean



Stain  
Resistant



Durable



7 Year  
Warranty



UV Stable  
Indoor Use  
Versus natural timbers



Horizontal  
Application



Vertical  
Application



Fire  
Rating



**Laminex™**  
Laminate



**Visit us**

[laminex.co.nz](http://laminex.co.nz)

**Call us**

0800 303 606

**Samples**

[laminex.co.nz](http://laminex.co.nz)

or 0800 999 939

**Follow US**



@laminexnz



@nzlaminex